

SSFA comparison

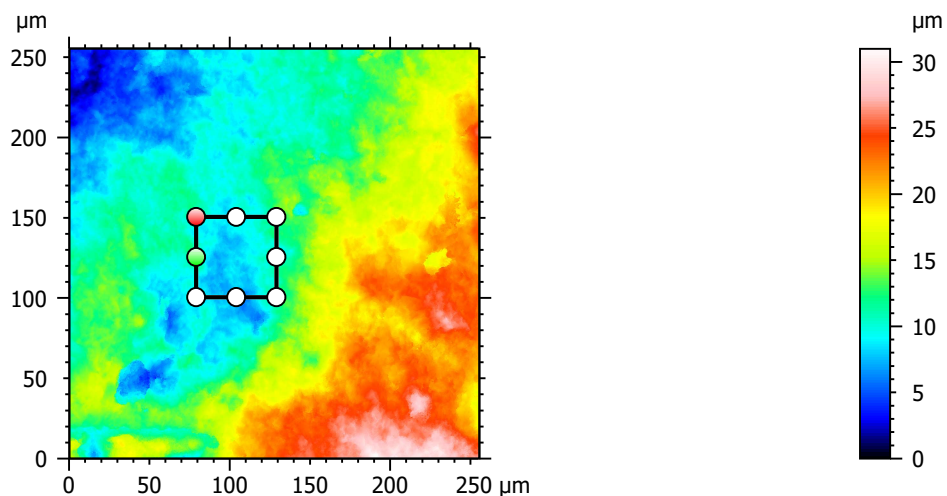
Template to process all lithic surfaces acquired with the Zeiss LSM 800 with the 50x/0.95 objective.

A. Processing

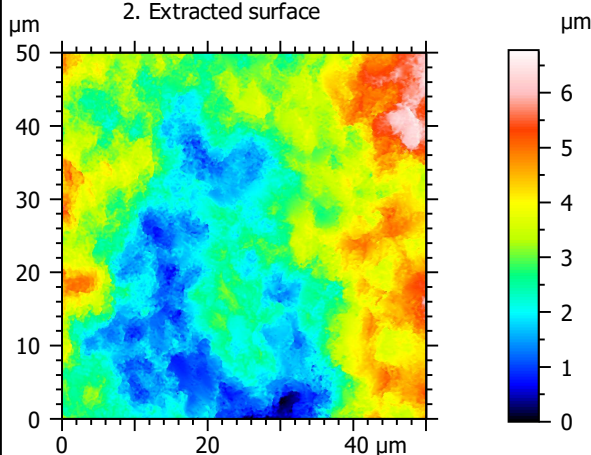
Identity card

Name:	FLT3-9_LSM2_50x-0.95_20190801_Area1_Topo		
File path:	D:\Data\3Ddata\SSFA\Lithics\Original surfaces\FLT3-9_LSM2_50x-0.95_20190801_Area1_Topo.sur		
Created on:	8/1/2019 4:23:16 PM		
Studiable type:	Surface		
Axis:	X		
Length:	255.5	µm	
Size:	3000	points	
Spacing:	0.08519	µm	
Axis:	Y		
Length:	255.5	µm	
Size:	3000	points	
Spacing:	0.08519	µm	
Axis:	Z		
Layer type:	Topography		
Length:	30.98	µm	
Size:	65532	digits	
Spacing:	0.0004728	µm	
NM-points ratio:	0.000 % (0 Pts)		

1. Acquired surface

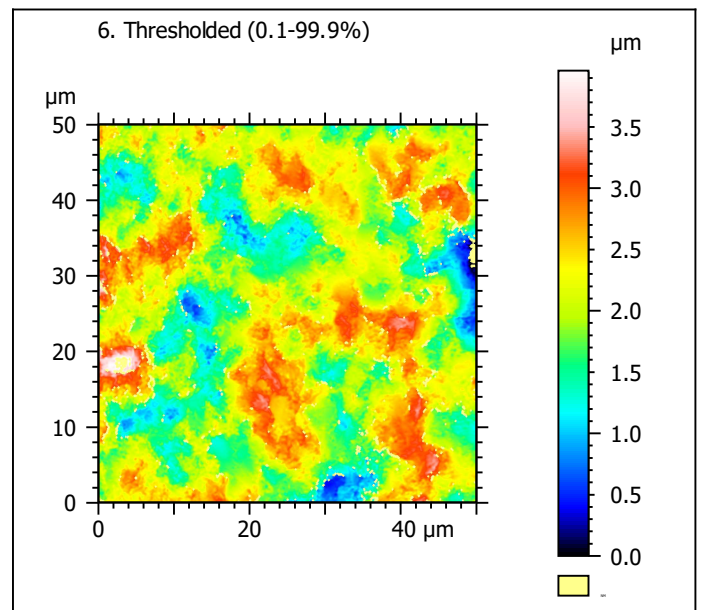
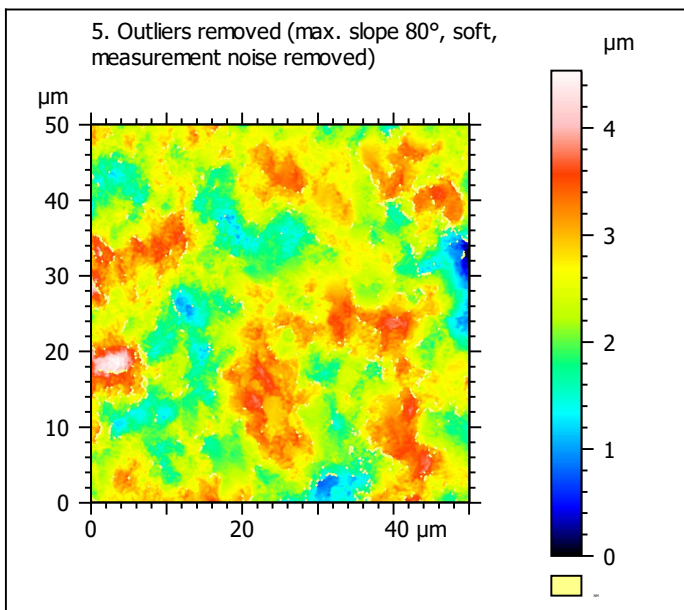
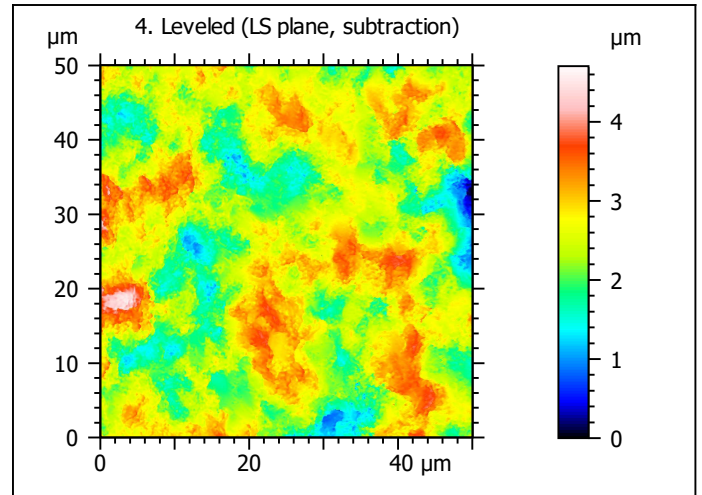
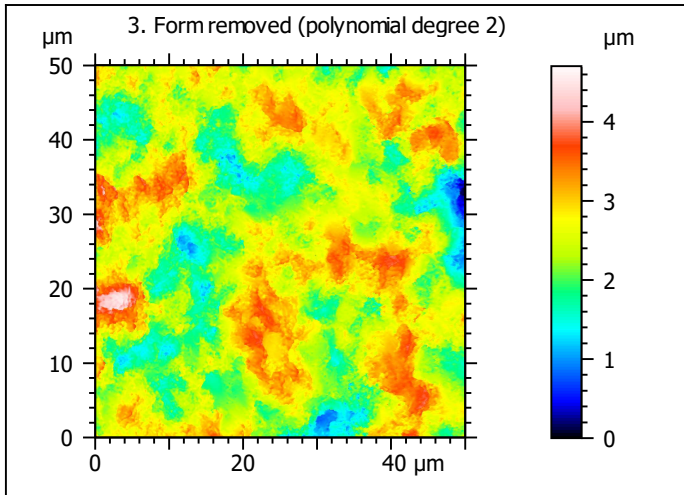


2. Extracted surface



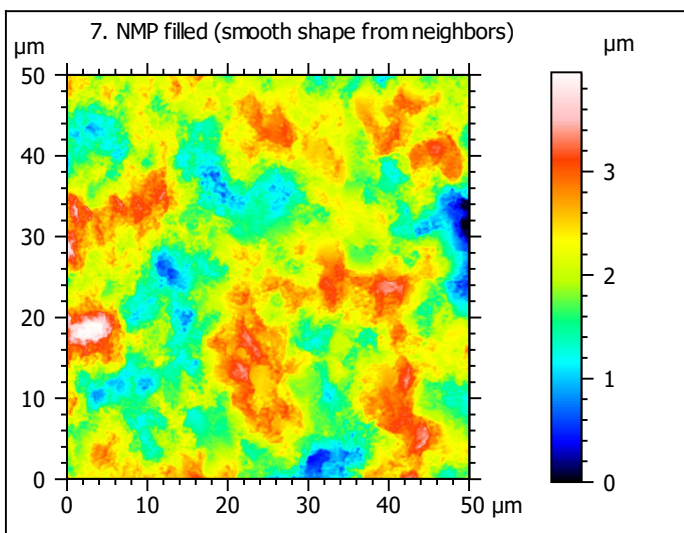
Identity card

Name:	FLT3-9_LSM2_50x-0....opo > Extracted area		
Axis: X			
Length:	50.00	μm	
Size:	588	points	
Axis: Y			
Length:	50.00	μm	
Size:	588	points	
Axis: Z			
Layer type:	Topography		
Length:	6.778	μm	
Size:	14336	digits	
NM-points ratio:	0.000 % (0 Pts)		

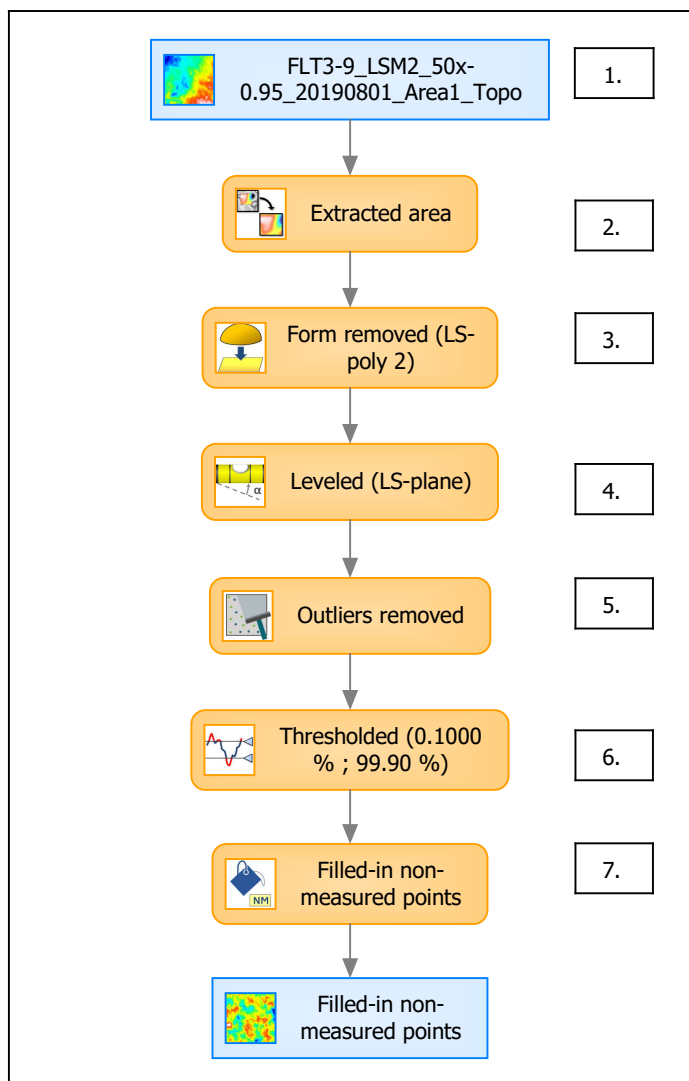


Identity card	
Name:	FLT3-9_LSM2_50x-0....e) > Outliers removed
Axis:	Z
NM-points ratio:	3.101 % (10720 Pts)

Identity card	
Name:	FLT3-9_LSM2_50x-0....0.1000 % ; 99.90 %)
Axis:	Z
NM-points ratio:	3.294 % (11388 Pts)



B. Summary



Identity card

Name: FLT3-9_LSM2_50x-0.95_20190801_Area1_Topo > Extracted area...resholded (0.1000 % ; 99.90 %) > Filled-in non-measured points

Studiabale type: Surface

Axis: X

Length: 50.00 μm

Size: 588 points

Spacing: 0.08519 μm

Axis: Y

Length: 50.00 μm

Size: 588 points

Spacing: 0.08519 μm

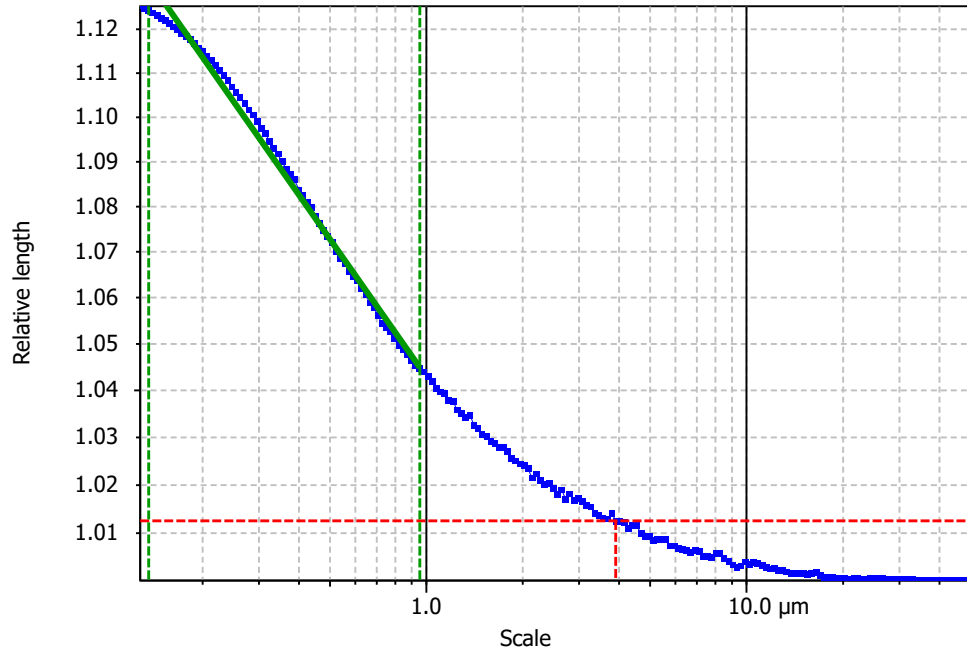
Axis: Z

Layer type: Topography

Length: 3.959 μm

Size: 8374 digits

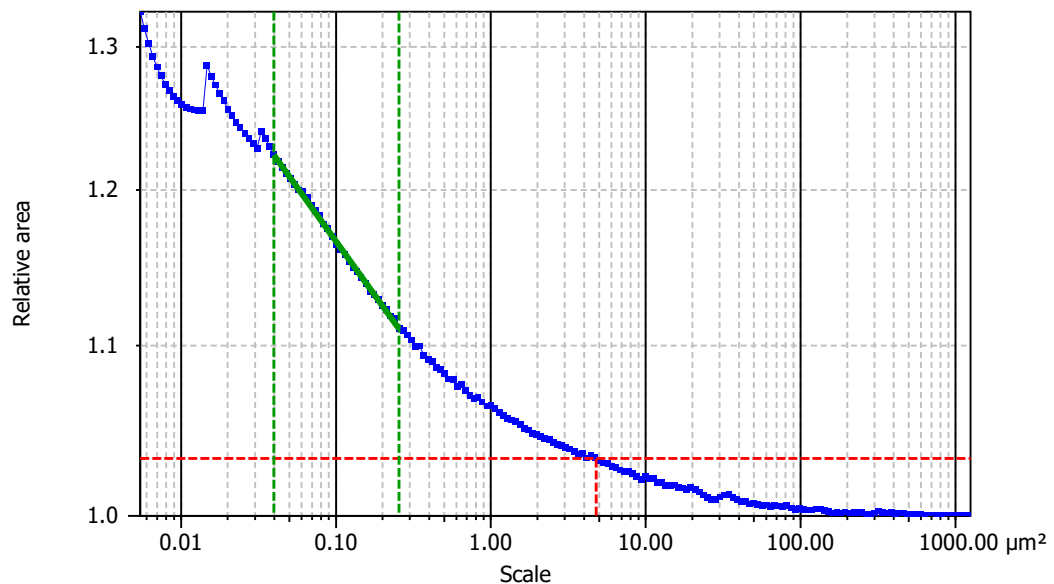
Spacing: 0.0004728 μm

**Information**

Method	Length-scale (rows)
--------	---------------------

Parameters

Parameters	Value	Unit	Comment
epLsar	0.000205		Length-scale anisotropy (Sfrax) (1.8 μm, 5°)
NewEplsar	0.01764		Length-scale anisotropy (1.8 μm, 5°)

**Information**

Method	Area-scale (four corners)
--------	---------------------------

Parameters

Parameters	Value	Unit	Comment
R ²	0.9985		Reg. coefficient R ²
Asfc	52.36		Fractal complexity
Smfc	0.1005	μm ²	Scale of max complexity
HAsfc9	0.1451		Heterogeneity of Asfc (3x3)
HAsfc81	0.2414		Heterogeneity of Asfc (9x9)